



Container - made in Germany zinc coated version

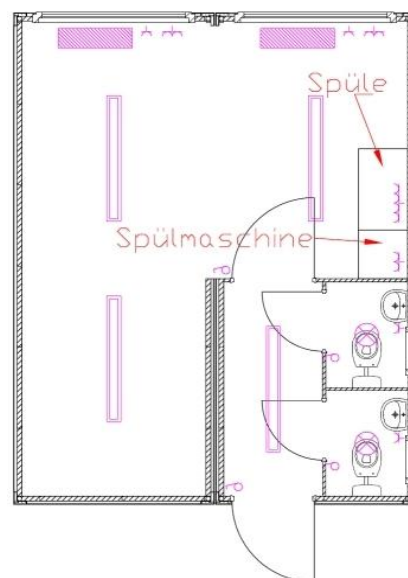


Office containers



Specification

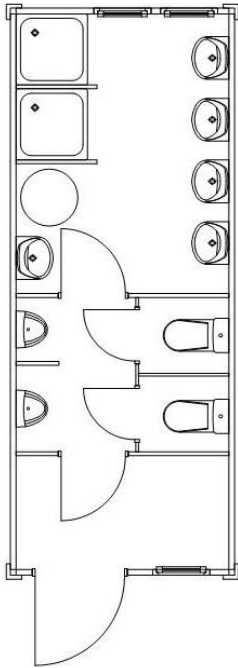
- Construction:** self-supporting steel construction of zinc coated and canted profiles, stackable version, painting with two components in silver (RAL 9006)
- Floor:** PVC-bottom covering 2 mm, clotted in one piece, chip tray, 140 mm heat insulation of mineral wool, zinc coated steel sheet
- Roof:** a profiled trapezoidal sheet metal coated with polyester 100 mm heat insulation of mineral wool, melamine-faced chipboard, colour: pure white (RAL 9010)
- External wall:** replaceable sandwich elements, PU-rigid foam heat insulation (CFC-free)
- Windows:** plastic window, white, double walled glazing, external roller shutter
- Double window:** 2.000 x 1.300 mm, with tilt and turn fitting (right side)
- Electrical installation:** at delivery ready-to-use installation according to VDE 0100 incl. lamps, light switches, sockets, distribution box 1 CEE-external plug (entry), 5-pole, 380 V 32 A + socket electric convector 2000 W



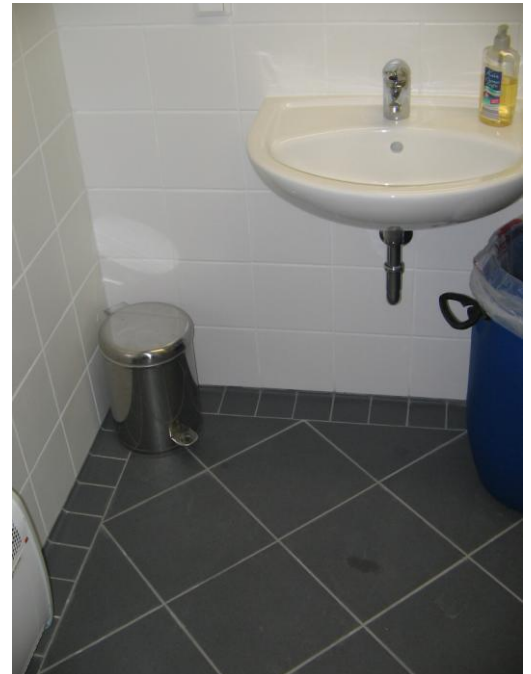
Double container



Sanitary Container



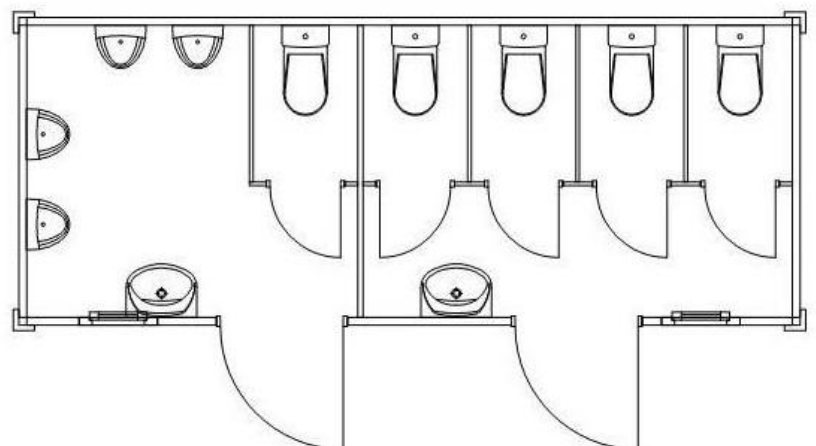
Standard sanitary container



Flagged sanitary container



Sanitary container with flush-mounted sinks



Restroom (men, women)



Schools & kindergartens

KB Container GmbH
Steinäcker 1
D-96132 Schlüsselfeld

Tel: +49 9952/93095-0
Fax: +49 9952/93095-20
info@kb-container.de
www.kb-container.de



School Munich



School Frankfurt, Main



School Munich

